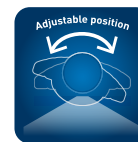
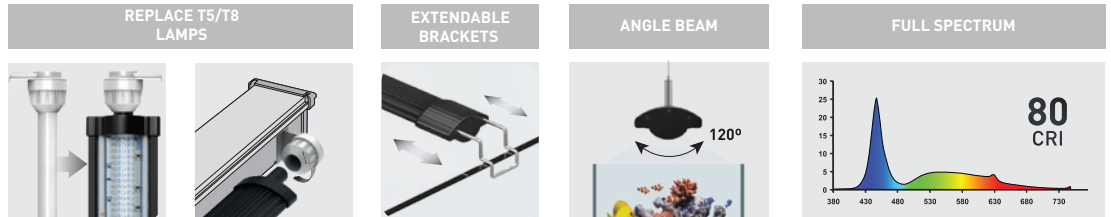
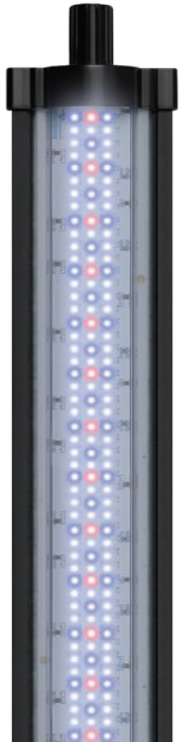


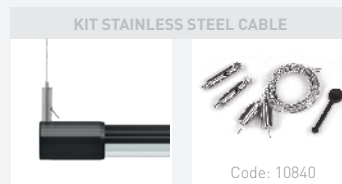
EASY LED UNIVERSAL

MARINE & REEF



**FOR ALL
AQUARIUM
BRANDS**

NOT INCLUDED



Compatible with

EASY LED CONTROL 1PLUS

Code: 11613



DIMENSION	AQUARIUM MINIMUM LENGTH*	AQUARIUM MAXIMUM LENGTH*	POWER	COLOUR TEMPERATURE (KELVINS)	T5 LAMPS REPLACEMENT	T8 LAMPS REPLACEMENT	LUMINOUS FLUX (lm)	PRODUCT CODE
438mm	45cm	70cm	20W	25000K	24W	15W	1300	09754
590mm	60cm	85cm	28W	25000K	28W	18W	1820	09755
742mm	75cm	100cm	36W	25000K	35W	25W	2340	09756
895mm	90cm	115cm	44W	25000K	45W	30W	2861	09757
1047mm	105cm	130cm	52W	25000K	54W	-	3381	09758
1200mm	120cm	145cm	62W	25000K	54W	36W	4031	09759
1450mm	145cm	170cm	72W	25000K	80W	-	4681	09760

*Without EASY LED UNIVERSAL end caps

EASY LED UNIVERSAL

SPARE PARTS

EXTENSION CABLE | 10847



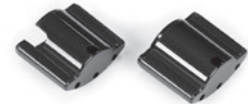
SPLITTER CABLE B/B | 11146



SPLITTER CABLE R/B | 12952



PLASTIC END CAPS | 10841



KIT STAINLESS STEEL CABLE | 10840



EXTENDABLE BRACKETS | 14036



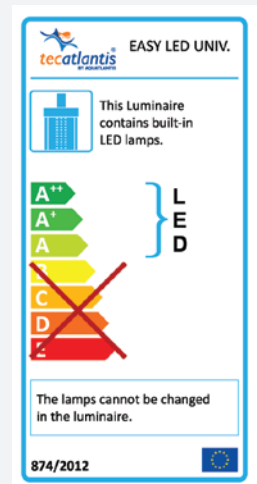
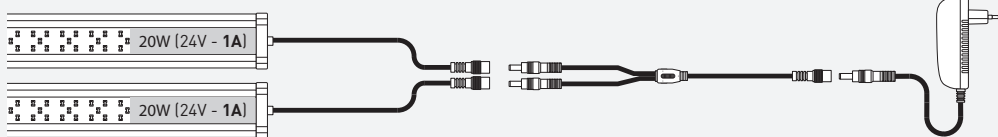
PLASTIC END CAPS (1200/1450mm) | 10842



When using the SPLITTER CABLE, the adaptor must be appropriate.

INPUT = OUTPUT

Exemple:



ADAPTORS

Adaptor 1A 24V	Adaptor 1,5A 24V	Adaptor 2A 24V	Adaptor 2,5A 24V	Adaptor 3,75A 24V	Adaptor 5A 24V
EASY LED UNIVERSAL 438	EASY LED UNIVERSAL 590 EASY LED UNIVERSAL 1200*	EASY LED UNIVERSAL 742 EASY LED UNIVERSAL 895 EASY LED UNIVERSAL 1450*	EASY LED UNIVERSAL 1047	If a SPLITTER CABLE is used	If a SPLITTER CABLE is used
10024	10025	10026	10027	11158	11242

* 2x Adaptor