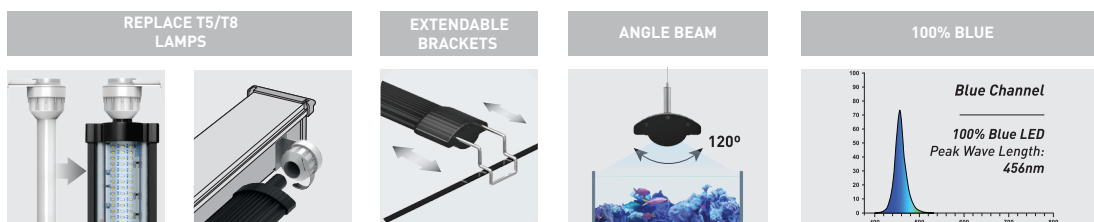
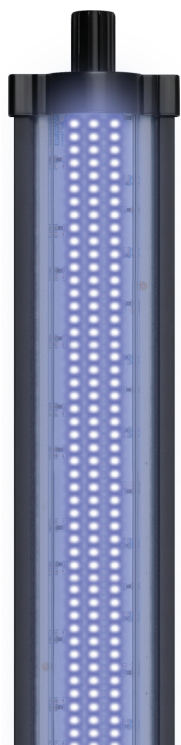
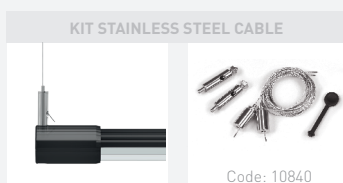


EASY LED UNIVERSAL

DEEP BLUE



NOT INCLUDED



Compatible with

EASY LED CONTROL 1PLUS

Code: 11613



DIMENSION	AQUARIUM MINIMUM LENGTH*	AQUARIUM MAXIMUM LENGTH*	POWER	T5 LAMPS REPLACEMENT	T8 LAMPS REPLACEMENT	PRODUCT CODE
438mm	45cm	70cm	20W	24W	15W	11281
590mm	60cm	85cm	28W	28W	18W	11282
742mm	75cm	100cm	36W	35W	25W	11283
895mm	90cm	115cm	44W	45W	30W	11284
1047mm	105cm	130cm	52W	54W	-	11285
1200mm	120cm	145cm	62W	54W	36W	11286
1450mm	145cm	170cm	72W	80W	-	11287

*Without EASY LED UNIVERSAL end caps

EASY LED UNIVERSAL

SPARE PARTS

EXTENSION CABLE | 10847



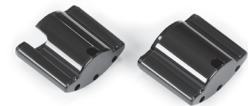
SPLITTER CABLE B/B | 11146



SPLITTER CABLE R/B | 12952



PLASTIC END CAPS | 10841



KIT STAINLESS STEEL CABLE | 10840



EXTENDABLE BRACKETS | 14036



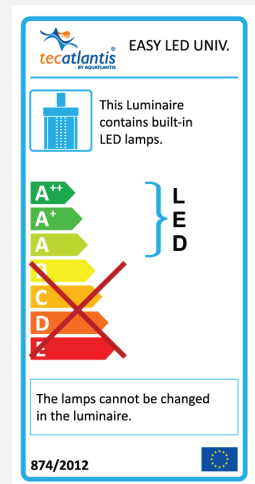
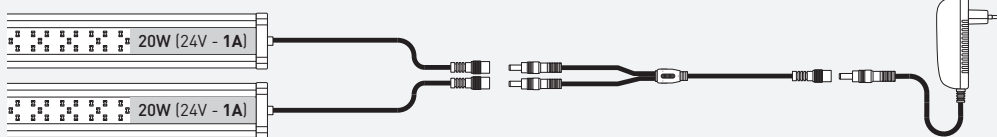
PLASTIC END CAPS (1200/1450mm) | 10842



When using the SPLITTER CABLE, the adaptor must be appropriate.

INPUT = OUTPUT

Exemple:



ADAPTORS

Adaptor 1A 24V	Adaptor 1,5A 24V	Adaptor 2A 24V	Adaptor 2,5A 24V	Adaptor 3,75A 24V	Adaptor 5A 24V
EASY LED UNIVERSAL 438	EASY LED UNIVERSAL 590 EASY LED UNIVERSAL 1200*	EASY LED UNIVERSAL 742 EASY LED UNIVERSAL 895 EASY LED UNIVERSAL 1450*	EASY LED UNIVERSAL 1047	If a SPLITTER CABLE is used	If a SPLITTER CABLE is used
10024	10025	10026	10027	11158	11242

* 2x Adaptor