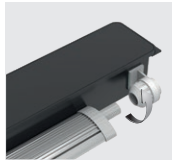
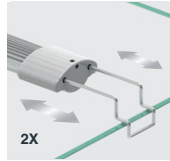
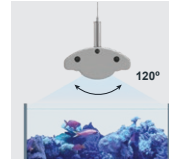
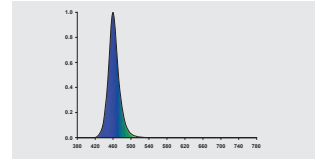


EASY LED UNIVERSAL 2.0

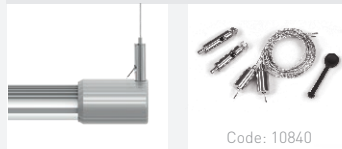
DEEP BLUE


**2 INDEPENDENT
LIGHT CHANNELS**

**REPLACE T5/T8
LAMPS**

**EXTENDABLE
BRACKETS**

ANGLE BEAM

100% BLUE

SECURE

ECONOMIC

ECOLOGIC

**LOW
CONSUMPTION**
**FOR ALL
AQUARIUM
BRANDS**
NOT INCLUDED
KIT STAINLESS STEEL CABLE


Code: 10840

 Compatible with
LUMINUS
 SMART LED CONTROLLER
 Code: 11649


DIMENSION	AQUARIUM MINIMUM LENGTH*	AQUARIUM MAXIMUM LENGTH*	POWER	T5 LAMPS REPLACEMENT	T8 LAMPS REPLACEMENT	LUMENS (lm)	LUX (lm)	PRODUCT CODE
438mm	45cm	70cm	20W	24W	15W	267	1790	12382
590mm	60cm	85cm	28W	28W	18W	380	2620	12383
742mm	75cm	100cm	36W	35W	25W	497	2450	12384
895mm	90cm	115cm	44W	45W	30W	614	2200	12385
1047mm	105cm	130cm	52W	54W	-	727	1990	12386
1200mm	120cm	145cm	62W	54W	36W	836	2100	12387
1450mm	145cm	170cm	72W	80W	-	1017	2270	12388

*Without EASY LED UNIVERSAL end caps

EASY LED UNIVERSAL 2.0

SPARE PARTS

EXTENSION CABLE | 10847



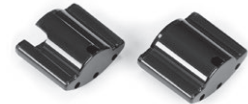
SPLITTER CABLE B/B | 11146



SPLITTER CABLE R/B | 12952



PLASTIC END CAPS | 10841



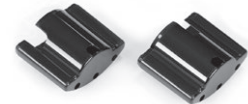
KIT STAINLESS STEEL CABLE | 10840



EXTENDABLE BRACKETS | 14036



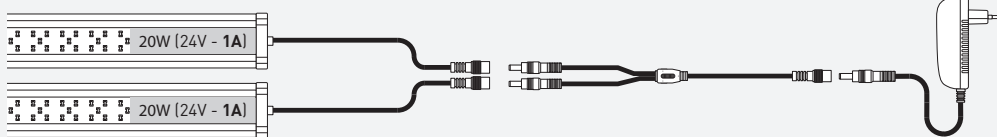
PLASTIC END CAPS (1200/1450mm) | 10842



When using the SPLITTER CABLE, the adaptor must be appropriate.

INPUT = OUTPUT

Example:



This product is only intended to be used for aquariophily, for the purposes of photosynthesis, and may never be used for other purposes.

Photosynthetic efficiency > 1.2 $\mu\text{mol}/\text{J}$

ADAPTORS

Adaptor 1A	Adaptor 1,5A	Adaptor 2A	Adaptor 2,5A	Adaptor 3,75A	Adaptor 5A
24V	24V	24V	24V	24V	24V
EASY LED UNIVERSAL 438	EASY LED UNIVERSAL 549 EASY LED UNIVERSAL 590	EASY LED UNIVERSAL 742 EASY LED UNIVERSAL 849 EASY LED UNIVERSAL 895	EASY LED UNIVERSAL 1047	EASY LED UNIVERSAL 1149 EASY LED UNIVERSAL 1200 EASY LED UNIVERSAL 1450	If a SPLITTER CABLE is used
10024	10025	10026	10027	11158	11242